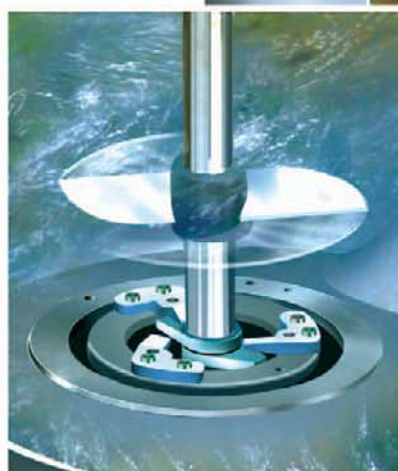


# Process tank for fish silage

CHOPPER PUMPS  
SUBMERSIBLE  
MIXERS

**Landia**<sup>®</sup>



# Silage of fish waste in process tank

Fish waste in mixing tank:

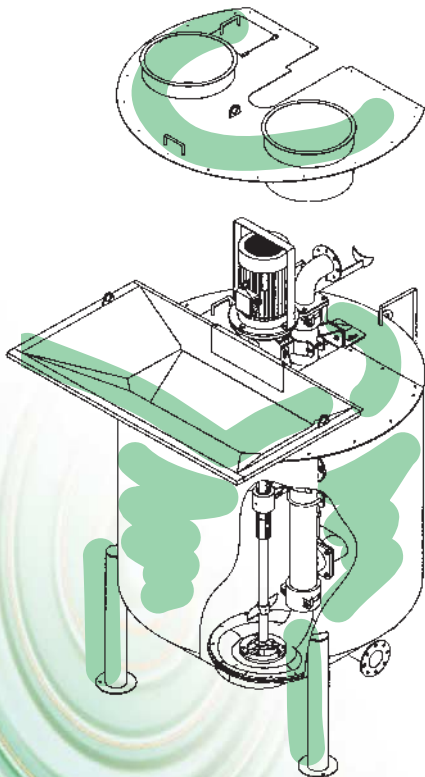


Silage mass after cutting and mixing with the pump:



## Silage tank with Landia chopper pump

During chopping of the waste, formic acid is added and processed into the medium. When the medium has been sufficiently processed and mixed, the pump is switched from mixing to pumping directly from the silage tank to the storage tank.



- Pump and tank of acidproof stainless steel
- Pump with shredder propeller and extended knife system
- Cover for manual or automatic filling
- Liquid lubricated intermediate and bottom bearing
- Connecting branch to acid feeder
- Access ladder to discharge valve
- 15.0-30.0 kW motor

The pump is an integral part of the tank. The inlet opening in the pump casing is thus as even with the tank bottom as possible. This design ensures that what enters the tank will also get through the knife system and the pump. The bottom valve ensures that the tank can be cleaned and emptied completely.

# Complete solutions for mixing and homogenization of fish silage in storage tanks

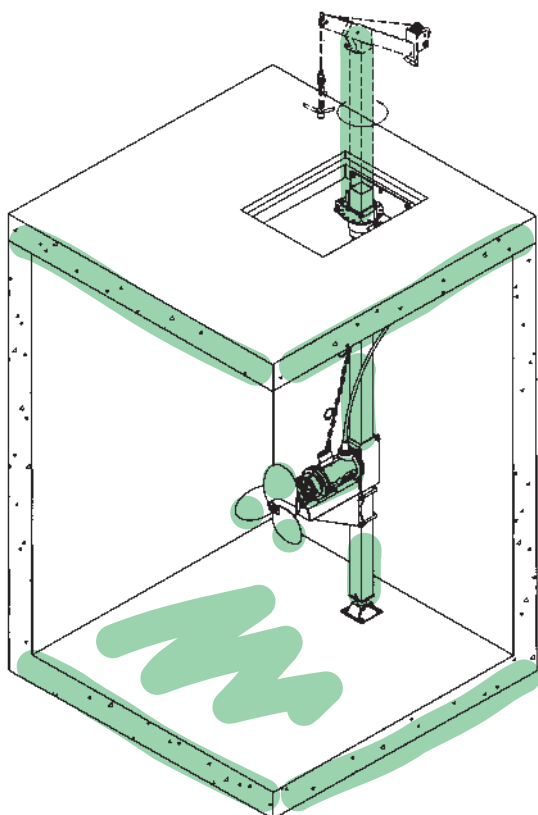
Landia has many years of experience within the field of mixing and homogenization of fish silage. Our engineers will design customized solutions which are based on short and heavy mixing. At the same time the power consumption and the wear of the mixer will be kept at a minimum.

The sealing system of the Landia mixers applied for the mixing of fish silage consists of lip seals, wear bushes and a grease chamber against the medium, as well as a mechanical seal between the grease chamber and the motor. Thus maximum resistance in connection with the harsh operating conditions is ensured.

The Landia mixers operate at medium temperatures up to 70° C and can be integrated in steel or concrete tanks.

## Submersible mixer

Type: POPR-I 300 rpm  
Motor size: 1.1-18.5 kW



The Landia mixers have large-blade propellers with a low number of revolutions. Thus they are well suited and efficient for the mixing of sludge with a high dry matter content.

Typical installation of mixer with removable crane arm in covered tank.

Landia offers solutions and systems to pump and mix difficult liquids. We develop, manufacture and distribute pumping and mixing systems. Pumps to chop, shred, cut, mascerate, grind and comminute. Mixers to agitate, homogenize and create liquid currents.

Landia products are distributed worldwide. Our representations offer consultancy and after sales service by Landia trained personnel.

Please contact:

LANDIA A/S  
DENMARK  
ISO 9001

**Landia**<sup>®</sup>

AK09A.C15 - 010703

**Landia A/S**  
Industrivej 2  
DK-6940 Lem St.  
Tel.: +45 97 34 12 44  
Fax: +45 97 34 16 98  
e-mail: [info@landia.dk](mailto:info@landia.dk)  
[www.landia.dk](http://www.landia.dk)