

# NEW: PowerMix

## Side Entry Mixer POPTR-I for installation in:

- Digesters
- Combined storage/post digester tanks
- Covered sludge and manure storage tanks

## Close coupled mixer with unique sealing system:

- two mechanical seals
- unique sealing system protecting mechanical seals against surrounding media
- exterior oil control
- exterior lubrication system

Installation in steel or concrete tanks.  
All submersed parts in stainless steel.  
ATEX-Certification for zones requiring explosion proof units.



# Side Entry Mixer POPTR-I

## ■ Performance and specifications:

Mixer Sizes from 9.0 to 30.2 HP – Propellers with 360 rpm.  
Mixer Performances up to 30,000 gpm.

## ■ Motor:

3-phase AC motor, 60 Hz, voltage: 460 V.

All specifications and performance data are applicable for water.  
Different propeller types can be supplied suitable for the medium in question.  
Other motor/propeller combinations are possible.

## ■ Materials:

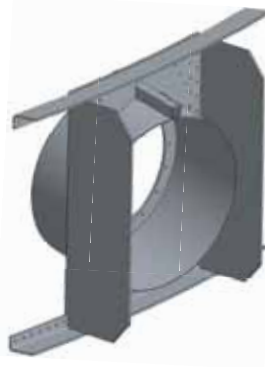
Motor housing: cast iron AISI A48-40B  
Oil and gear chamber: stainless steel AISI 316  
Propeller: stainless steel AISI 304  
Gear shaft: steel (AISI 9840), protected against medium.

## ■ The following information should be given with each inquiry:

- purpose of application
- dimensions of silo/tank
- type of liquid
- dry matter content
- temperature
- expected working periods/-intervals



POPTR-I



flange for installation  
in steel tank



flange for installation  
in concrete tank

The text and technical data given may not be reproduced partly or completely without permission from Landia A/S.  
We reserve the right to make technical alterations. CL00B.C15-010209

**Landia, Inc.**  
111 Triangle Trade Drive  
Cary, NC 27513  
Phone: 919 466 0603  
Fax: 919 460 1666  
E-mail: [info@landiainc.com](mailto:info@landiainc.com)  
[www.landiainc.com](http://www.landiainc.com)

**Landia**<sup>®</sup>

LANDIA A/S  
DENMARK  
ISO 9001