

## Submersible propeller pump AXP

Landia propeller pump type AXP 500 for slurry circulation and homogenisation in channels under slatted floors. Also well-suited for very long slurry channels. Regular daily operating intervals controlled by a timer ensure effective mixing and homogeneous slurry.



- Powerful mixing and circulation in slurry channel systems. Homogeneous slurry, ready to be spread at any time without problems with clogging of channels sections beneath the slatted floors.
- With a Landia propeller pump, your system will work at full satisfaction, cost effectively and with a minimum of your time involved.
- Profit by our know-how when planning your channel system, our Consultancy is your security.

# Submersible propeller pump AXP

## Performance and specifications:

Motor size, 3x400V:	5.5 kW	7.5 kW	11.0 kW	15.0 kW	18.5 kW
Current:	10.5 amp	15.0 amp	21.5 amp	28.5 amp	34.5 amp
Propeller rpm:	400 rpm	400 rpm	400 rpm	475 rpm	475 rpm
Approx. perform. in slurry m <sup>3</sup> /h:	2000 m <sup>3</sup> /h	2700 m <sup>3</sup> /h	4000 m <sup>3</sup> /h	5500 m <sup>3</sup> /h	6800 m <sup>3</sup> /h

## Article nos:

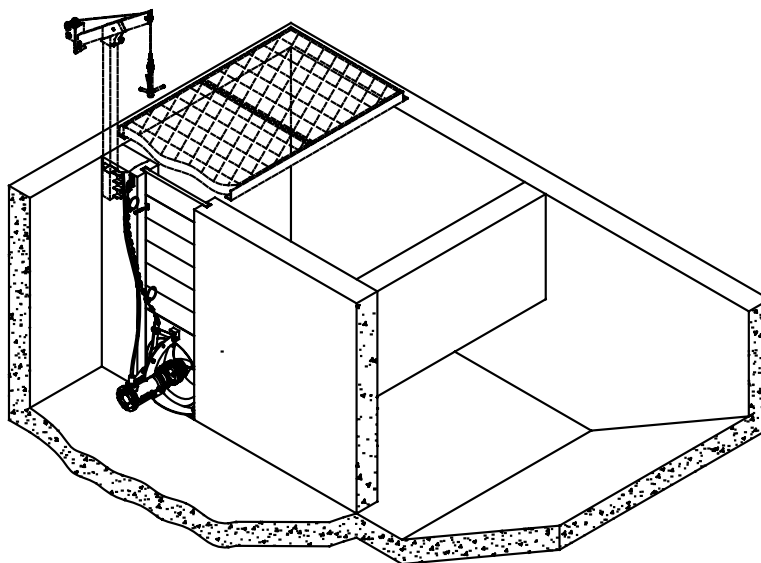
Propeller pump:	1804503	1804507	1804508	1804515	1804518
Chain:	7112029	7112009	7112009	7112009	7112009
Lifting ring for chain:	7112122	7112122	7112122	7112122	7112122
St. st. hook for cable tightening:	7314090	7314090	7314090	7314090	7314090
Guide frame:	7312114	7312114	7312114	7312114	7312114
Block boarding:	3441627	3441627	3441627	3441627	3441627

## Weight and measurements:

Weight incl. chain and guide frame:	134 kg	168 kg	178 kg	245 kg	255 kg
--	--------	--------	--------	--------	--------

For installation dimensions see principal drawings 3740716, 3740717, 3740718 and 3740719.

**IMPORTANT:** Health and safety instructions must be closely observed during the operation of the pump. Slurry, stored during a long period, might contain dangerous gas. In this case, it may be necessary to replace the liquid part of the slurry with water before applying the pump.



The text and the technical data given must not be reproduced partly or completely without permission from Landia A/S.  
We reserve the right to make technical alterations. 1203GB 050908

Head office: **Landia A/S**  
**Industrivej 2**  
**DK- 6940 Lem St.**  
**Tel.: + 45 97 34 12 44**  
**Fax: +45 97 34 16 98**  
**e-mail: info@landia.dk**  
**www.landia.dk**

UK-Branch: **Landia (UK) Ltd.**  
**Waymills Industrial Estate**  
**Whitchurch, Shropshire SY13 1TT**  
**Tel.: 01948 661 200**  
**Fax: 01948 661 201**  
**Email: info@landia.co.uk**  
**www.landia.co.uk**