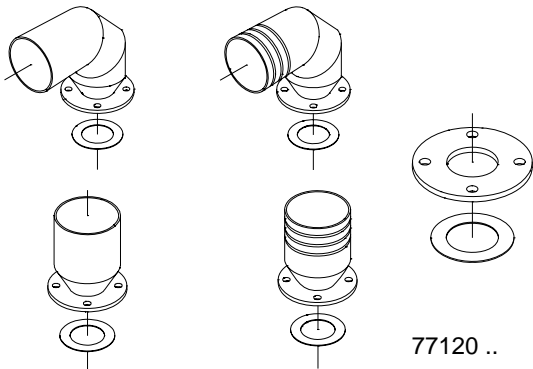
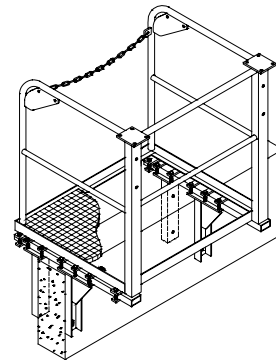
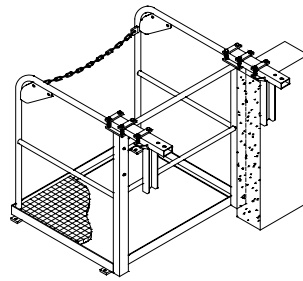


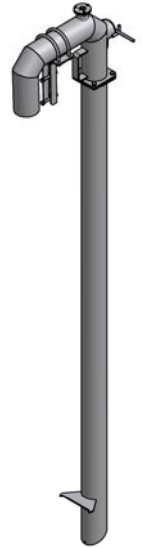
## Accessories for pump systems



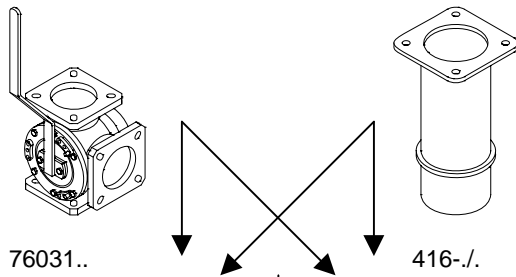
77120 ..



7212012

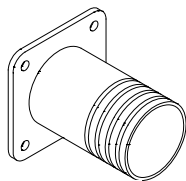


7502053

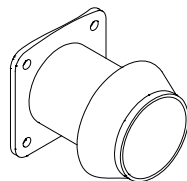


76031..

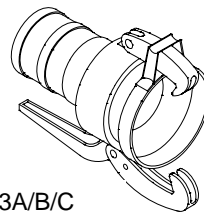
416-./.



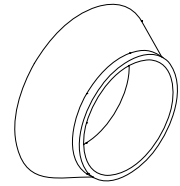
174A./.



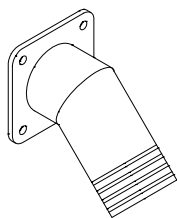
173A./.



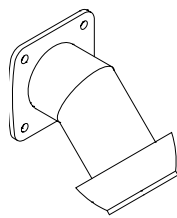
163A/B/C



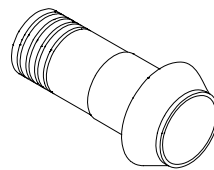
164A/B/C



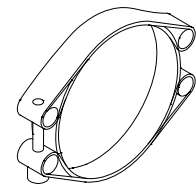
174B./.



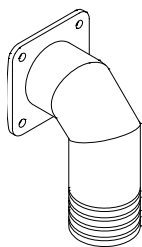
173B./.



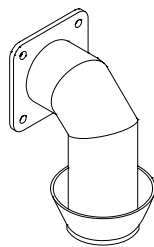
167-./.



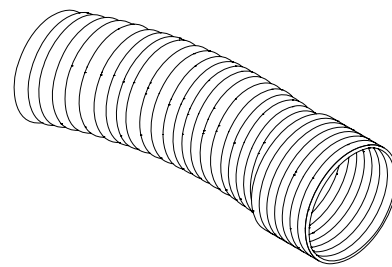
93400..



174C./.



173C./.



9340078/9340079/9340080

---

The text and technical data given must not be reproduced partly or completely without permission from Landia A/S.  
We reserve the right to make technical alterations.

214056GB-030106

---

Head office: **Landia A/S**  
**Industrivej 2**  
**DK-6940 Lem St.**  
**Tel.: + 45 97 34 12 44**  
**Fax: + 45 97 34 16 98**  
**e-mail: [info@landia.dk](mailto:info@landia.dk)**  
**[www.landia.dk](http://www.landia.dk)**

UK-Branch: **Landia (UK) Ltd.**  
**Waymills Industrial Estate**  
**Whitchurch, Shropshire SY13 1TT**  
**Tel.: 01948 661 200**  
**Fax: 01948 661 201**  
**Email: [info@landia.co.uk](mailto:info@landia.co.uk)**  
**[www.landia.co.uk](http://www.landia.co.uk)**